



INSPIRE



Initiative for Social
Performance in
Renewable Energy

LEARNING | KNOWLEDGE | PARTNERSHIPS | INNOVATION

2023

ANNUAL REPORT

CONTENTS

2
LETTER FROM
THE BOARD

4
ABOUT
INSPIRE

8
KEY PROJECTS
IN 2023

16
ADDITIONAL
ACTIVITIES

21
FINANCIALS
IN 2023

5
AMBITION

6
APPROACH

8
2023 YEAR IN
SUMMARY

10
XAZULULA -
TRAUMA
INFORMED
LEADERSHIP IN
COMMUNITY
DEVELOPMENT

12
TRUST MATTERS -
CAPACITATING
COMMUNITY
TRUSTS IN
REIPPP

14
REIPPP LEARNING
EVENT 2023

19
COMMUNICATIONS
& MEDIA
ENGAGEMENTS

20
FUNDERS &
IMPLEMENTATION
PARTNERS

LETTER FROM THE BOARD OF DIRECTORS

We are very proud to present the second annual report for **INSPIRE – Initiative for Social Performance in Renewable Energy** – launched in South Africa in June 2021 and established to scale and amplify the positive impacts of the energy transition. INSPIRE is now an established young non-profit organisation reflecting exponential growth in funding and impact in the sector.

Our gratitude to the initiating support of our founding partners; Synergy Global Consulting, Actis, Lekela (now owned by Infinity Power) and BTE Renewables (now owned by Engie). We would also like to acknowledge the continued support from implementing partners; SAWEA and SAPVIA, the IPP Office and other institutional stakeholders who's welcoming acceptance and support has allowed us to become a leading voice.

2023 was a year of maturing for INSPIRE, moving from a start-up to an established organisation, delivering on our first set of funding and projects, as well as raising repeat funding for second phases and exploring and securing new funding partnerships.

It was also a year for our board to reflect on the journey travelled in getting off the ground and shifting gear to building a sustainable entity and pursuing key questions around our **theory of change** to ensure we are delivering real impact for the renewable energy sector in South Africa and beyond with a lasting positive legacy.

The Industrial Development Corporation (IDC) has

been a significant partner in 2023 with the launch of the 'Trust Matters' programme. This is a 2-year endeavour to give meaningful support and training to the community-representing organisations that hold equity stakes in the IPP programmes. This very important work lies at the heart of our efforts to have impact in the sector and we are excited with the progress and potential the results have to further enhance community participation in renewable energy projects.

The Renewable Energy industry in South Africa has grown since 2011, with the winning bids for IPP allocations made in bid window 6 amounting to 4200MW. This expansion has increased potential for exciting and significant positive socio-economic development impacts with the over 90 IPPs that are currently operational in South Africa. Parallel to this, society's expectations for measurable progress in economic development and just transformation are ever-increasing. The renewable energy ecosystem needs to leverage what has been learnt in past years to ensure maximum positive impact.





In 2023, our endeavours were action-packed with opportunities for growth and learning. It marked a significant milestone as we ventured into implementing multiple grants for the first time. These grants served as catalysts for innovation and progress.

International donor funding provided the essential core funding and guidance in 2022 supporting INSPIRE's organisational development and capacity building. We are grateful for your continued support in 2023 and look forward to working together in 2024 and beyond. This support has enabled us to appoint our first Executive Managing Director, Dr Holle Linnea Wlokas. We take this opportunity to acknowledge the indispensable contribution that she has made to the founding and establishment of INSPIRE to date, and to congratulate her for her very deserved appointment as the INSPIRE Managing Director. Under Holle's helm and leadership, we believe INSPIRE will continue to grow in excellence and continue to be the trusted partner for key stakeholders in the energy sector.

We believe that the Renewable Energy (RE) sector's legitimacy will be measured partially on its ability to deepen socio-economic impact. We are currently in a unique window of opportunity to build leadership capacity in the sector – in terms of skills, knowledge and innovation – to maximise the developmental opportunities associated with the energy transition.

INSPIRE is a collaborative initiative, bringing together organisations that are interested in driving system-wide change both locally and globally. We are inviting further partners to join the initiative to strengthen and deepen its impact in social performance in the renewable energy sector with renewable energy stakeholders in the Global South.

We are looking forward to the future and will continue to engage with partners, both new and existing, to expand this influence and transformation of the energy sector for the benefit of all.

We invite you to participate with us in this journey!
Board of Directors



Holle Linnea Wlokas



Jennifer Boca



Libby Hirshon



Letsiwe Thuli Dlamini

ABOUT INSPIRE

INSPIRE's mission is to advance the field of social performance in renewable energy through building capacity and developing systems and relationships which support a transformational and just energy transition

INSPIRE seeks to build the relational and developmental capacity of renewable energy stakeholders, with an initial focus on corporate social performance practitioners with the aim, in South Africa, to strengthen the REIPPPP ecosystem to deliver economic development and transformational impacts. INSPIRE is a platform for stakeholders to collaborate and work together to problem-solve and innovate together, to collaborate, to build capacity and skillsets to drive the ecosystem to make a more impactful contribution to the energy transition.

INSPIRE is positioned at the forefront of the renewable energy sector's ambition to drive sustainable development and provide a high-profile platform to reach a wide audience of stakeholders on this journey, including community shareholders and leadership, government, academia, and researchers, as well as civil society and other intermediary organisations involved with renewable energy implementation and operation.

INSPIRE's work is **grounded over a decade of implementation experience** with the South African REIPPPP and with that **INSPIRE** is a home-grown South African Initiative, with a strong focus on South Africa, for the first year at least, before growing its reach further across the continent and possibly beyond. Amongst the founding parties of **INSPIRE**, strong international networks exist already and conversations about an international reach and/or collaborations are maturing.

INSPIRE was established in **South Africa as a non-profit company on 10 April 2022** (Registration number 2022/420733/08), with non-profit organisation (NPO) status awarded in May 2022 (Registration number 278-881) and a public benefit organisation (PBO and section 18A) applications have been lodged with SARS in November 2022.

OUR DEFINITION OF SOCIAL PERFORMANCE

All of a company's interactions, activities, and outcomes that can affect – positively or negatively its asset level stakeholders (host communities, local and regional government, industry/business, civil society, and so on). ”



INSPIRE'S AMBITION

1

Grow capacity in the renewable energy eco-system to maximise economic development and transformation potential of projects and policy

2

Drive best practice development in community engagement and development

3

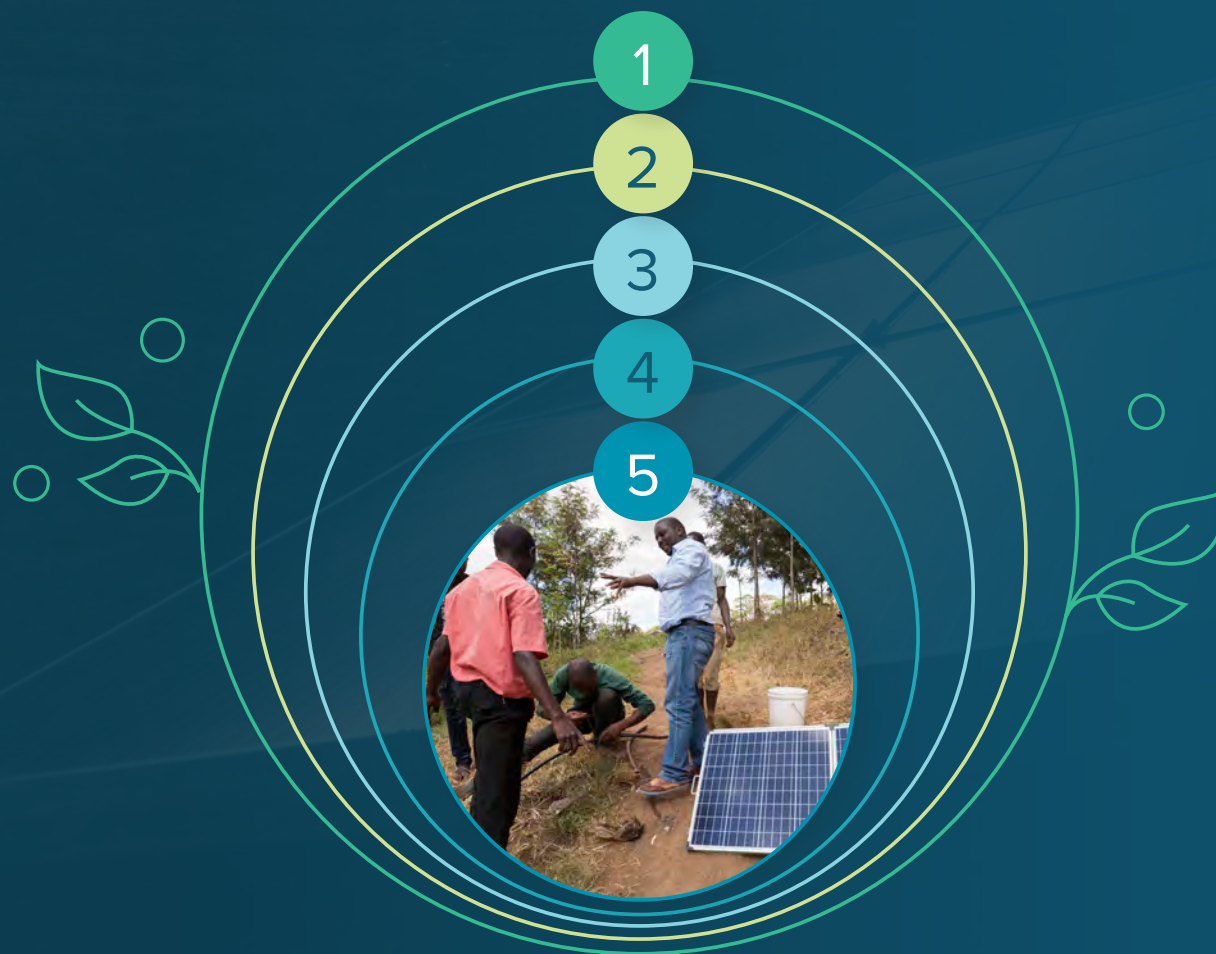
Grow leadership for a people-centred just transition

4

Professionalise the field of social performance in the renewable energy sector

5

Deepen the community development impact of South Africa's renewable energy procurement programme



APPROACH



LEARNING & LEADERSHIP

Developing the capacity of industry professionals and stakeholders through training, communities of practice and leadership development, enabling a professionalized practice and empowering internal change.

RESEARCH & INNOVATION

Conducting action-oriented research to support improved practices and policy. Prototyping and incubating transformation-focused approaches and investments.

PARTNERSHIPS

Driving transformation and collaboration through engagement and networking with key stakeholders.

KNOWLEDGE

Deepen awareness and understanding of social performance in the sector.

INSPIRE'S YEAR **2023** IN SUMMARY

INSPIRE 's approach is organised into four areas of work.

LEARNING & LEADERSHIP



We learnt with and from **55** REIPPPP Social Performance practitioners.

#learningevents

RESEARCH AND INNOVATION



2 new benefit sharing practises researched and documented

#trustmatters
#xazulula

PARTNERSHIPS



Uncountable new connections made and ideas and actions inspired

#togetherwecan

KNOWLEDGE



8 new knowledge outputs produced, **25** additional products made publically available

#inspireprojectoutputs
#onlinelibrary

KEY PROJECTS IN 2023

Let's take a brief look back before diving into the key projects INSPIRE implemented in 2023.

Work towards conceptualising INSPIRE started in March 2021, the following year was a time of rapid incubation, enabled by a decade of work and relationship building with the eco-system. The seed funding secured from founding partners allowed INSPIRE to engage experts to advise and implement the formal institutional establishment and build institutional capacity as a new organisation and raise awareness about its vision and mission. INSPIRE's growth phase activities in 2022 have been initiated in the learning, knowledge, and partnership areas through funding from the initial seed and other donor funders. In addition, the Synergy project 'USAID INSPIRE Online Dialogues' was also implemented under the INSPIRE umbrella.

In 2023, the landscape of our endeavours was action-packed with opportunities for growth and learning. Moreover, the year was defined by our relentless efforts to forge numerous new connections and partnerships. These collaborations expanded our reach and enriched our initiatives, propelling us towards our shared goals. The year 2023 also saw the creation of our inaugural internship position, contributing to nurturing and cultivating skills to contribute meaningfully to our mission.

As we reflect on the accomplishments and challenges of the past year, it becomes evident that 2023 was a period of maturation for INSPIRE. We embraced each opportunity for growth, learning from our experiences, and we continue to service the renewable energy ecosystem to advance its social performance.



KEY PROJECTS IN 2023 INCLUDED:



Xazulula

Trauma informed leadership in community development



Trust Matters

Capacitating Community Trusts in REIPPPP



REIPPPP Learning Event 2023

Inspired Leadership for Community Impact

XAZULULA

TRAUMA INFORMED LEADERSHIP IN COMMUNITY DEVELOPMENT



INSPIRE with the Centre for Mental Wellness and Leadership (CMWL) partnered in the project “Xazuzula- Effective Social Performance in Traumatized Contexts”- the project conducted a pilot study and intervention in Tsitsikamma, focusing on communities hosting and holding shares in a large-scale renewable energy project through assessing the psychological architecture of the communities and implementing trauma-informed community leadership interventions.

This work explores and uncovers the nature, extent and depth that stress and trauma have impacted a community, working to unpack and address the underlying neuropsychological factors, therefore allowing people to recover and build sustainable coping strategies for the individuals and the community at large. Following thorough analysis, this project will deliver strategies and objectives that will be implemented by leaders and decision-makers, which will address these challenges and ultimately provide frameworks, tools and support to unlock the potential for community development and deepen REIPPPP’s community impact.

This project offers a comprehensive approach to understanding and mitigating the challenges that traumatised communities face and documents how this work can practically be applied in the context of community engagements and development work in renewable energy projects. There have been Resource Exchange and Community Smart Consultation and Consent (CSCC) Initiative presentations where Resolve, the funder, gathered a global network that supports inclusive, local land and natural resource governance and is a component of the Community Smart Consultation and Consent Initiative.

This project aims to strengthen community consultation and consent practices to close the implementation gap and incentivise and support inclusive and effective natural resource governance. The CMWL gave a presentation under the theme, Community Financial Benefits, exploring various avenues through which communities can participate in the financial benefits of development, specifically focusing on trauma-informed governance in South Africa. The CMWL and INSPIRE, have developed a case study and a content guide for trauma-informed leadership in community development for the renewable energy sector.

In 2024, the project team will introduce community leaders and development practitioners actively working with mining-affected communities in Sierra Leone to the Xazulula approach to community leadership development. A pilot training in Sierra Leone will be followed by further exchanges with international practitioners at the Resource Exchange Summit in Sierra Leone.

In parallel, work will continue to towards a long-term capacity development programme for trauma-informed community leadership.





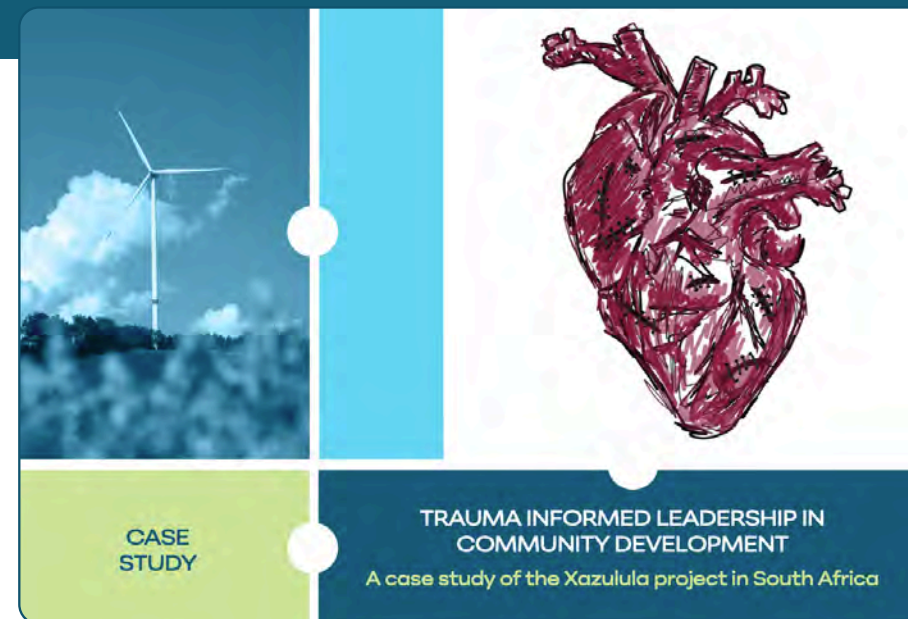
▲ CONTENT GUIDE

Trauma Informed Leadership in Community Development.

Sector: Renewable Energy

Center for Mental Wellness and Leadership (CMWL) and INSPIRE

The content guide has been developed to advance community development within the renewable energy sector by building trauma-informed leadership capacity. It provides information that can be used by social practitioners and community leaders for enhancing their capacity to lead within highly stressful and traumatic contexts.



▲ CASE STUDY

Trauma Informed Leadership in Community Development

A case study of Xazulula project in SA

Center for Mental Wellness and Leadership (CMWL) and INSPIRE

This case study reflects on a pilot in a community in Tsitsikama, in the Eastern Cape Province of South Africa, where a trauma informed community development programme initiated by the Centre for Mental Wellness and Leadership (CMWL) in partnership with Cennergi. This included a capacity building intervention in 2021 with the elected community leadership of the Amamfengu tribe.



The INSPIRE and partners are working on the project themed “Trust Matters: Capacitating Community Trusts in REIPPPP – Mobilising Community Leadership to Drive Developmental Impact”. This initiative is an investment in exploring the full spirit of community ownership.

We aim to empower community trusts in REIPPPP, mobilise community leadership and drive developmental impact. The envisaged objectives of the project include;

- Develop an in-depth understanding of types of REIPPPP trusts, identify and connect with trusts and survey them for experiences and needs.
- Create forums to engage with trusts, validate research findings and co-design ideas for support offerings.
- Developed prototypes and selected priority prototype-ready for implementation.
- Implemented and evaluated capacity-building offerings. Supported community trust stakeholders who are better capacitated and networked with peers, allowing for enhanced, more effective, and impactful trust operations and investment.

During this time of reporting, we are concluding phase 1 of the project, which aims to develop an in-depth understanding of REIPPPP community trusts and identify and connect with as many as possible and survey them for experiences and needs. INSPIRE has conducted an extensive literature review, data needs, and facilitated a focus group discussion, where senior industry stakeholders and trust intermediaries gathered to discuss the community trusts in REIPPPP and contributed to improving the trust maturity framework, which will be applied.

INSPIRE developed a model that consists of role players and recipients of trust support and factors affecting the efficacy of trusts (Trust Maturity Framework).



In 2024 INSPIRE will proceed with other phases of the project which are envisaged to include

TRUST BUILDING WORKSHOPS

- In-person events in major REIPPPP Provinces
- Build a network amongst trusts and especially community trustees.
- Ground-proof trust maturity framework and gain additional insights about support needs.
- Develop beginnings of a shared vision for trust impact

CONVENE INTERMEDIARIES

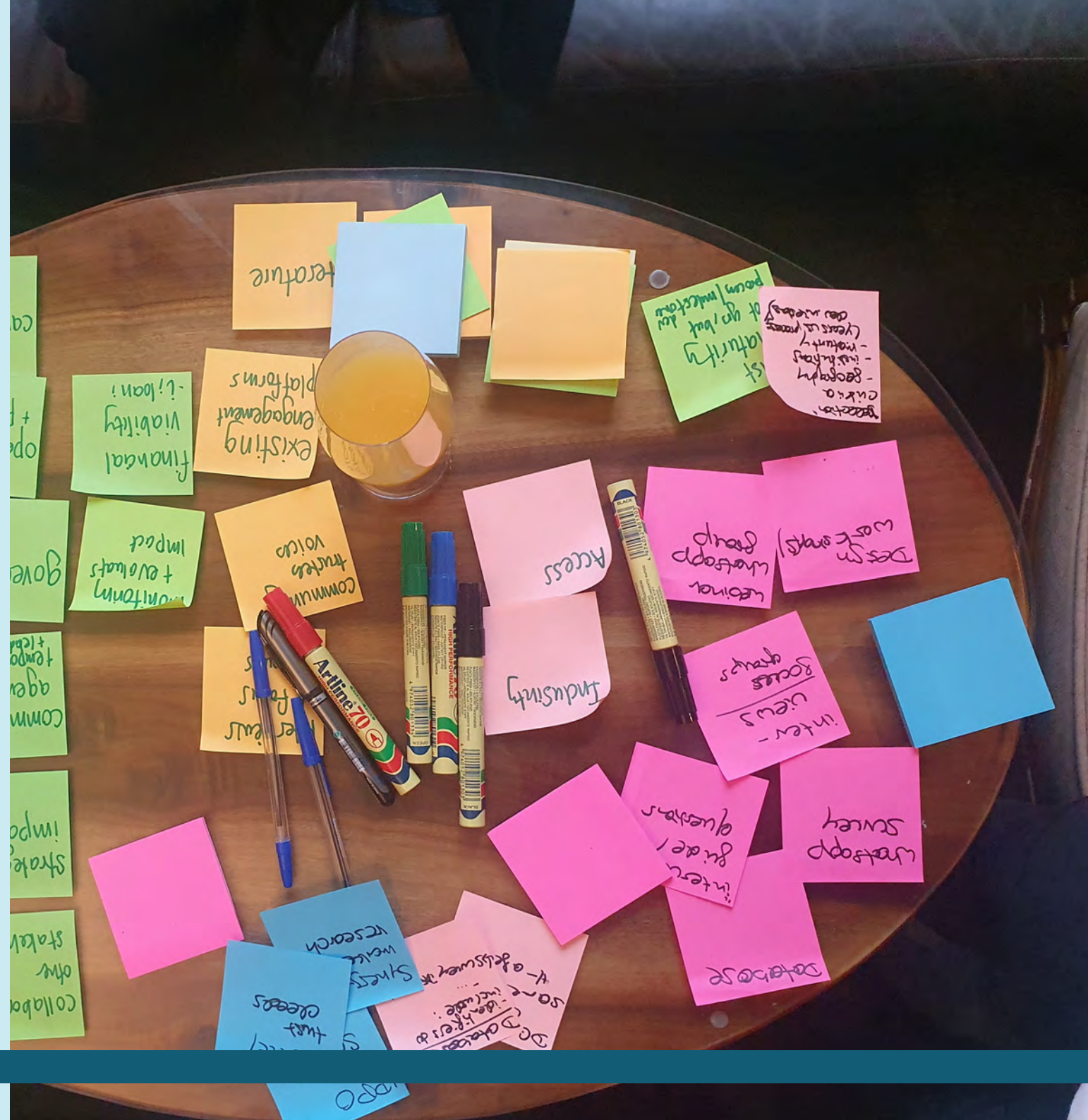
- Engagements with intermediaries and community shareholding financiers
- Establish types and quality of resources and support available for trusts.
- Develop beginnings of a shared vision for trust impact

CURATE TOOLKIT

- Curate available resources and offerings in one central place online (e.g. INSPIRE website)
- Create a comprehensive yet accessible self-assessment tool

TRUST BUILDING CONFERENCE

- In-person event over 2 days for REIPPPP trusts and especially community trustees
- Co-convened with intermediaries



Trust Maturity Framework

Trust Support Ecosystem



01

Regulatory

The core structure and structuring of the trust that determines its purpose.

- Governance
- Mandate
- Independence of Trust
- Operations & Processes

02

Capacity

The knowledge, skills, financial, and other resources that enable the trust to perform.

- Fin. Strength & Viability
- Knowledge | Experience
- Inter/Intra-personal challenges & skills
- DEI & belonging

03

Vision & Strategy

The practice of inclusively crafting the vision and delivery plan to impact optimally.

- Strategy Development
- Collaboration with other Stakeholders
- Community engagement, agency and empowerment

04

Impactful Delivery

Strategic, robust, ambitious, cost effective and iterative programme conceptualisation with high localisation quota

- Conceptualisation
- Programme Structuring
- M&E and improvement
- Cost effective; efficient
- Localisation
- Sharing learnings

REIPPPP LEARNING EVENT

INSPIRED LEADERSHIP FOR COMMUNITY IMPACT



Due to the positive outcome of the highly anticipated 2020 learning event, INSPIRE hosted a second REIPPPP Learning Event in October 2023 themed *Inspired Leadership for Community Impact* aiming to:

- To build capacity for inspired leadership in support of deepened community impact.
- To allow for strengthened relationships and networks of support.
- To better understand the factors that are enabling and restraining bold leadership in our sector.
- To activate people to participate in collaborative projects, programmes and change within the renewable energy sector.
- To gain fresh perspectives and practical knowledge to apply to your work.

Our 2023 Learning Event brought together diverse and engaged esteemed speakers and thought leaders addressing critical aspects of community impact within REIPPPP. The event provided valuable practice insights and opportunities to enhance leadership skills, strengthening networks of support for greater community impact through discussions on;

- Community trusts and strategic investment
- The role of leadership in a wounded context
- Mapping the wider ecosystem
- Bold leadership for deepened community impact.

The speakers, distinguished in their fields, brought forth profound perspectives that resonated deeply with the challenges and opportunities intertwined within community development and energy transition.

THE KEY INSIGHTS INCLUDE BUT ARE NOT LIMITED TO;

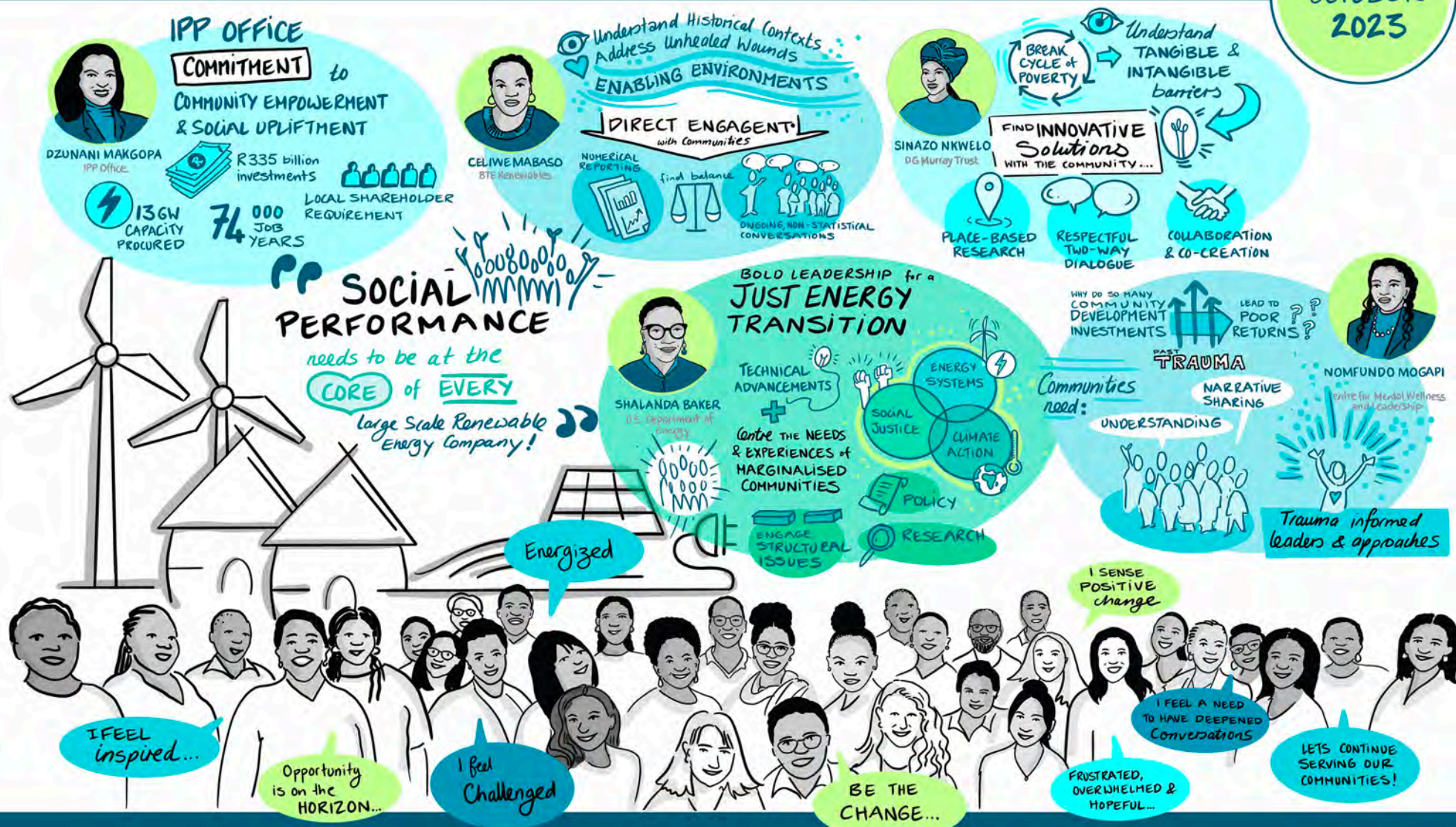
- **Understanding historical contexts and addressing unhealed wounds within marginalised communities is essential to foster lasting change.** In the landscape of community development within the REIPPPP, there's a paradoxical situation where some communities seem forgotten, stuck in a time capsule, lacking motivation. While big companies aim for significant achievements, these communities primarily seek sustenance.
- **The deep-seated historical trauma within communities requires a nuanced understanding and deliberate efforts** to engage and heal communities from past wounds for sustainable development. It is important to facilitate trauma-informed leadership to address trauma, fostering resilient leaders capable of leading communities towards healing and development.
- **It is emphasised that impact in communities might not be immediately visible**, requiring a shift in perspective towards evaluating the long-term effects rather than short-term gains.
- **Collaboration is identified as key, yet the fear of sharing risks impedes progress.** There's a call for synchronised efforts among IPPs, government, and communities for effective implementation.
- **It is important to engage in ongoing, non-statistical conversations with communities.** Government support is essential, but there are challenges in implementing plans on a quarterly basis, often focusing on the number of people reached rather than the transformative impact. Therefore, the pressure for numerical reporting within short-term frames hinders the implementation of sustainable, long-term initiatives.
- **The importance of strategic investments and community trusts in nurturing the potential of the youth** within renewable energy programs was acknowledged. There is an opportunity to harness the youth demographic for economic advancement. This necessitates a concentrated focus on skills development and nurturing the potential of younger generations. Shifting human development outcomes to break the cycle of poverty requires understanding the root causes, including intangible barriers like cognitive development.
- **The potential to realise justice, freedom, and liberation lies through a deliberate and inclusive approach to restructuring the energy system to avoid past mistakes impacting marginalised communities.** This involves not only focusing on technological advancements but also centring the needs and experiences of marginalised communities to build a fairer and more equitable future. Despite acknowledging challenges, collective responsibility is emphasised, asserting that the quest for justice and equitable energy systems requires a united effort from all voices.



REIPPPP LEARNING EVENT

INSPIRED LEADERSHIP FOR COMMUNITY IMPACT

26
OCTOBER
2023



Visit our website online library to read more about the learning event

<https://inspire-excellence.net/knowledge/2023-reipppp-learning-event-report-inspired-leadership-for-community-impact/>

MORE EXCITING INSPIRE ACTIVITIES IN 2023

GLOBAL CLEAN ENERGY NETWORK

INSPIRE is engaged in the newly formed **Global Clean Energy Network (GCEN)**, which is an international network of funders and organisations active in the energy transition.

THE RESOURCE EXCHANGE

INSPIRE joined the **Resource Exchange**, which is a global network that supports inclusive, local land and natural resource governance, and is a component of the **Community Smart Consultation and Consent Initiative**. This initiative aims to strengthen community consultation and consent practices to close the implementation gap and incentivize and support inclusive and effective natural resource governance. The Initiative is implemented by **Conservation International**, **Landesa**, **RESOLVE**, and the **University of Queensland's Centre for Social Responsibility in Mining**.

The **Resource Exchange** connects people to the tools, knowledge, resources and relationships they need to drive local decisions about natural resources. **INSPIRE**, together with the **Center for Mental Wellness and Leadership**, through support from Resolve has developed a content guide for trauma-informed leadership in community development for the renewable energy sector.

The Resource Exchange network continues and in 2024 **INSPIRE**, the **CMWL**, and other organisations supporting communities in specific jurisdictions globally, will gather in Sierra Leone to learn and share their experiences related to inclusive local governance.

SAREM WORKING GROUP FOR INCLUSIVE DEVELOPMENT

This newly formed working group is meeting in support of the further development and implementation of the **South African Renewable Energy Masterplan (SAREM)**. **INSPIRE** serves as an active member to this group.

SAWEA WORKING GROUP ON ECONOMIC DEVELOPMENT

This industry working group has been meeting since 2013, at times jointly convening with the Sub-Committee on Socio-Economic Development of the South Africa Photo Voltaic Industry Association (SAPVIA). In 2023, **INSPIRE** representatives continued to serve on the group as active members.



EXTENDED NETWORKS

350.org

CONSERVATION INTERNATIONAL

The Resource Exchange

RESOLVE

CMWL
Centre For Mental Wellness
And Leadership

Landesa™
Rural Development Institute

SMI CSR
Centre for Social
Responsibility in Mining

SAWEA
South African Wind Energy Association

South African Renewable Energy Masterplan

An industrialisation plan for the renewable energy value chain to 2030

WE ARE IN A KNOWLEDGE PARTNERSHIP WITH GOVERNMENT

EASTERN CAPE DEPARTMENT OF ECONOMIC DEVELOPMENT, ENVIRONMENTAL AFFAIRS AND TOURISM

INSPIRE continues to be a knowledge partner to the **Eastern Cape Department of Economic Development, Environmental Affairs and Tourism (DEDEAT)**. DEDEAT and INSPIRE are utilising synergies where possible in their work towards these objectives defined by the Department

WE CONVENED AND HOSTED ROUNDTABLE WITH THE US STATE DEPARTMENT

ROUNDTABLE IMPLEMENTING JUST ENERGY TRANSITIONS

INSPIRE, together with the **Initiative for Energy Justice** from the United States of America, hosted a roundtable to discuss the role of community ownership, benefits, and inclusive procurement in fostering energy justice.

WE PRESENTED AND CONTRIBUTED TO DISCUSSIONS AT LOCAL AND INTERNATIONAL ROUNDTABLES, COURSES AND CONFERENCES

ROUNDTABLE ON REALISING HUMAN RIGHTS IN THE ENERGY TRANSITION IN AFRICA

INSPIRE participated in a roundtable on realising Human Rights in the Energy Transition in Africa held in Kenya. The objective of the roundtable is to share insights, expertise and ideas for embedding responsible business conduct in energy transition frameworks and projects on the continent. Taking a participatory approach, the roundtable convened a select group of 20-25 experts and practitioners working with the energy transition, human rights and responsible business conduct. INSPIRE's contribution to human rights in the energy transition is evident through its people-centered approach, community engagement efforts, collaboration initiatives, capacity building, research activities, and the provision of knowledge resources. By prioritising these aspects, INSPIRE aims to ensure that the energy transition is not only environmentally sustainable but also socially equitable and respectful of human rights.

UCT POSTGRAD LECTURE

INSPIRE delivered a lecture to the 30 plus participants of the postgraduate course on Energy and Climate Policy at the University of Cape Town (UCT). The lecture focused on key insights and learnings about community benefit sharing from South Africa's large-scale renewable energy implementation.



EXTENDED NETWORKS



Sharing benefits— a South African social performance perspective

Energy and Climate Policy course
MPhil Energy and Development Studies, UCT

HOLLE WLOKAS
14 June 2023

INSPIRE Initiative for Social
Performance in
Renewable Energy
LEARNING | KNOWLEDGE | PARTNERSHIPS | INNOVATION



EXTENDED NETWORKS



WE FOLLOWED INVITATIONS TO ATTEND CONFERENCES, WORKSHOPS AND INDABAS

INSPIRE board and team members attended renewable energy events in South Africa and Europe. Amongst those events where the **Africa Energy Forum in Barcelona** where INSPIRE's Inaugural Report was distributed. The **Climate Justice Coalition** Dialogue in Gqeberha, **Alternative Mining Indaba** in Cape Town and the **Windaba Connect** session adjacent to the annual Windaba Conference. Team members also contributed to the Presidential Climate Commission's Dialogue on Social Ownership for Renewable Energy and a virtual workshop organised by **Fraunhofer ISI** on Envisioning hydrogen cooperation between South Africa and Germany.

COMMUNICATIONS AND MEDIA ENGAGEMENTS

LINKEDIN

LinkedIn is INSPIRE's most active social media account, with followers and visitors from around South Africa and globally.

NEWSLETTER

INSPIRE's newsletter audience is reporting a steady growth, with subscriptions increasing every month. Number of monthly newsletter subscribers: 456 with 30% engagement rate.

OPINION PIECE

In April 2023, the Sunday Times ZA published its quarterly 'Collective Insights' edition. INSPIRE authors Yumnaa Firfirey and Holle Wlokas contributed an article on 'JET: A big test for the "S" in ESG'. The opinion piece is online available https://issuu.com/sundaytimesza/docs/fm_financialmail_collective_insight

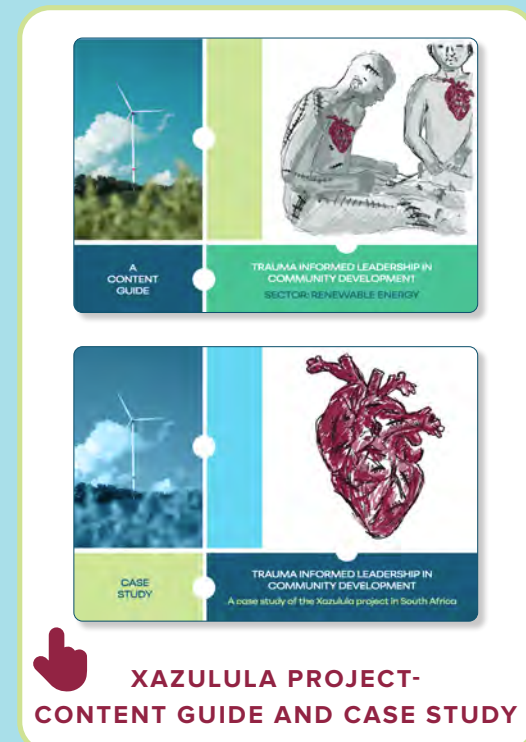
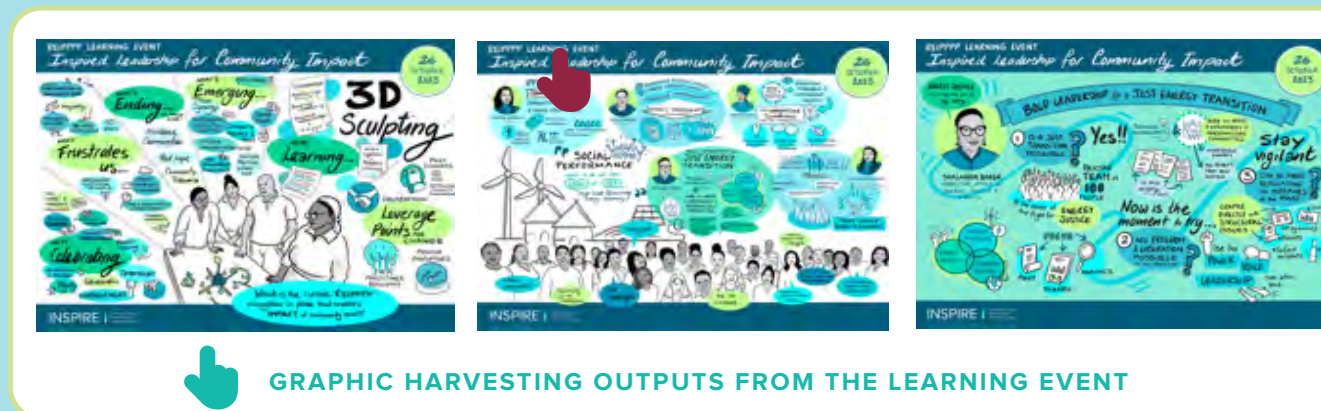
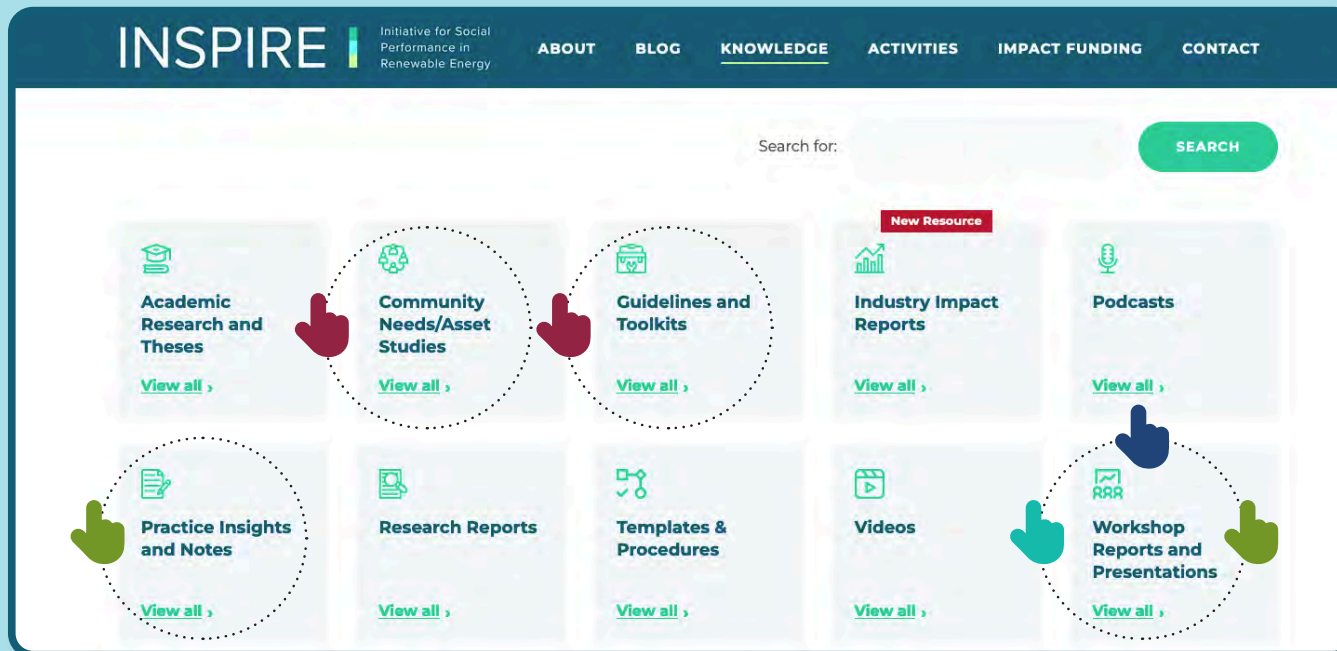
ONLINE LIBRARY

INSPIRE's online library offers 112 curated knowledge resources such as reports, presentations, and infographics. Accessible to the public, the platform is hosted on the INSPIRE website and continues to grow, serving as a valuable resource for stakeholders.



2023 PROJECT OUTPUTS AVAILABLE ON THE LIBRARY

| www.inspire-excellence.net/knowledge



FUNDERS AND IMPLEMENTATION PARTNERS

Since INSPIRE's inception, we have worked with and garnered support from trusted and aligned partners.

INSPIRE's seed-funders (2021/2022):



Funders in 2023:

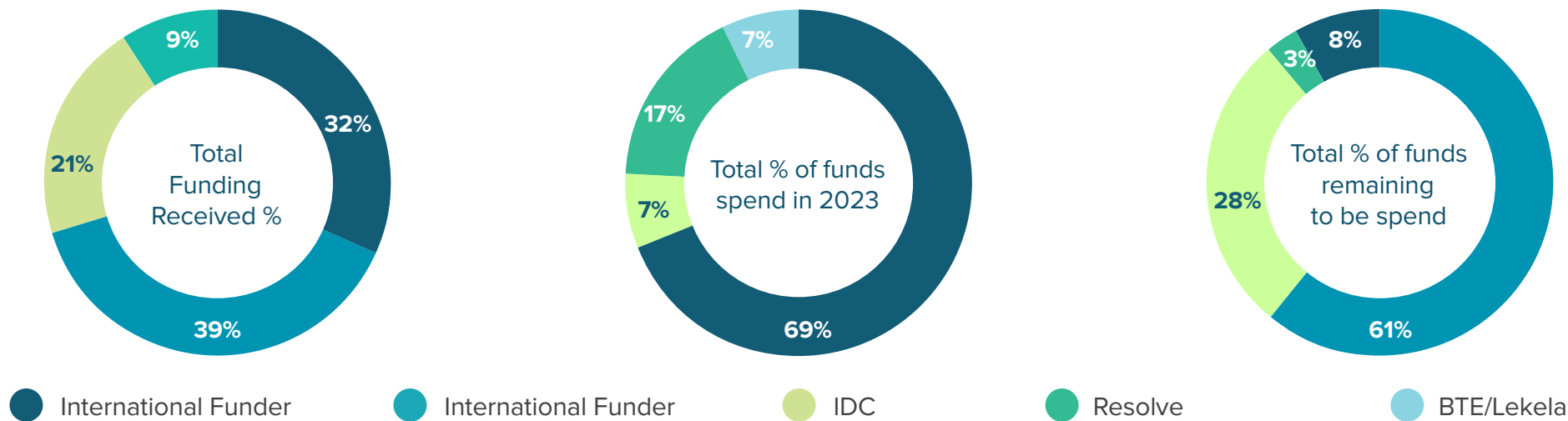


Implementation partners in 2023:



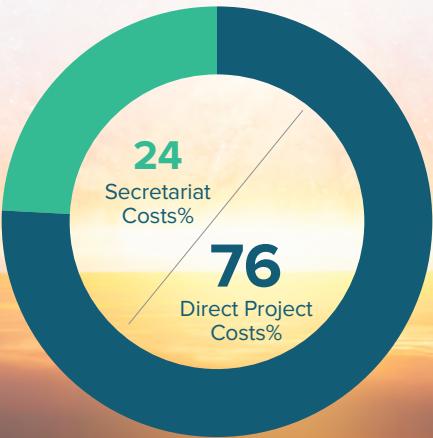
FINANCIALS IN 2023

Comparative figures based on 2023 annual financial statements



Expenditure to date

Secretariat costs include staff costs to run the secretariat.



STATEMENT OF FINANCIAL POSITION AS AT 31 DEC 2022

<i>Figures in Rand</i>	<i>Note(s)</i>	<i>31 December 2023</i>	<i>31 December 2022</i>
Assets			
Non-Current Assets			
Trade and other receivables	2	12 380	
Current Assets			
Trade and other receivables	2	34 882	671 125
Cash and cash equivalents	3	5 089 862	417 260
		5 124 744	1 088 385
Total Assets		5 137 124	1 088 385
Equity and Liabilities			
Equity			
Retained income		5 132 662	810 969
Liabilities			
Current Liabilities			
Trade and other payables	4	4 462	277 416
Total Equity and Liabilities		5 137 124	1 088 385

INVITATION TO JOIN INSPIRE'S WORK

As a collaborative initiative that brings together organisations that are interested in driving system-wide change, we aim to support and connect people, projects, and processes. We, therefore, invite further partners to join the initiative to strengthen and deepen its impact. Funding and active partnerships are welcome.

We would love to hear from stakeholders in the renewable energy sector, social and development consulting or intermediaries, representatives of civil society, government, community trusts, or any other interested parties. All are welcome to share their ideas with us on how!



INSPIRE



Initiative for Social
Performance in
Renewable Energy

LEARNING | KNOWLEDGE | PARTNERSHIPS | INNOVATION

www.inspire-excellence.net

