

# INSPIRE

Initiative for Social  
Performance in  
Renewable Energy

LEARNING | KNOWLEDGE | PARTNERSHIPS | INNOVATION

# Initiative for Social Performance in Renewable Energy

Building leadership for a people-centred just transition



actis

Lekela

bte  
renewables

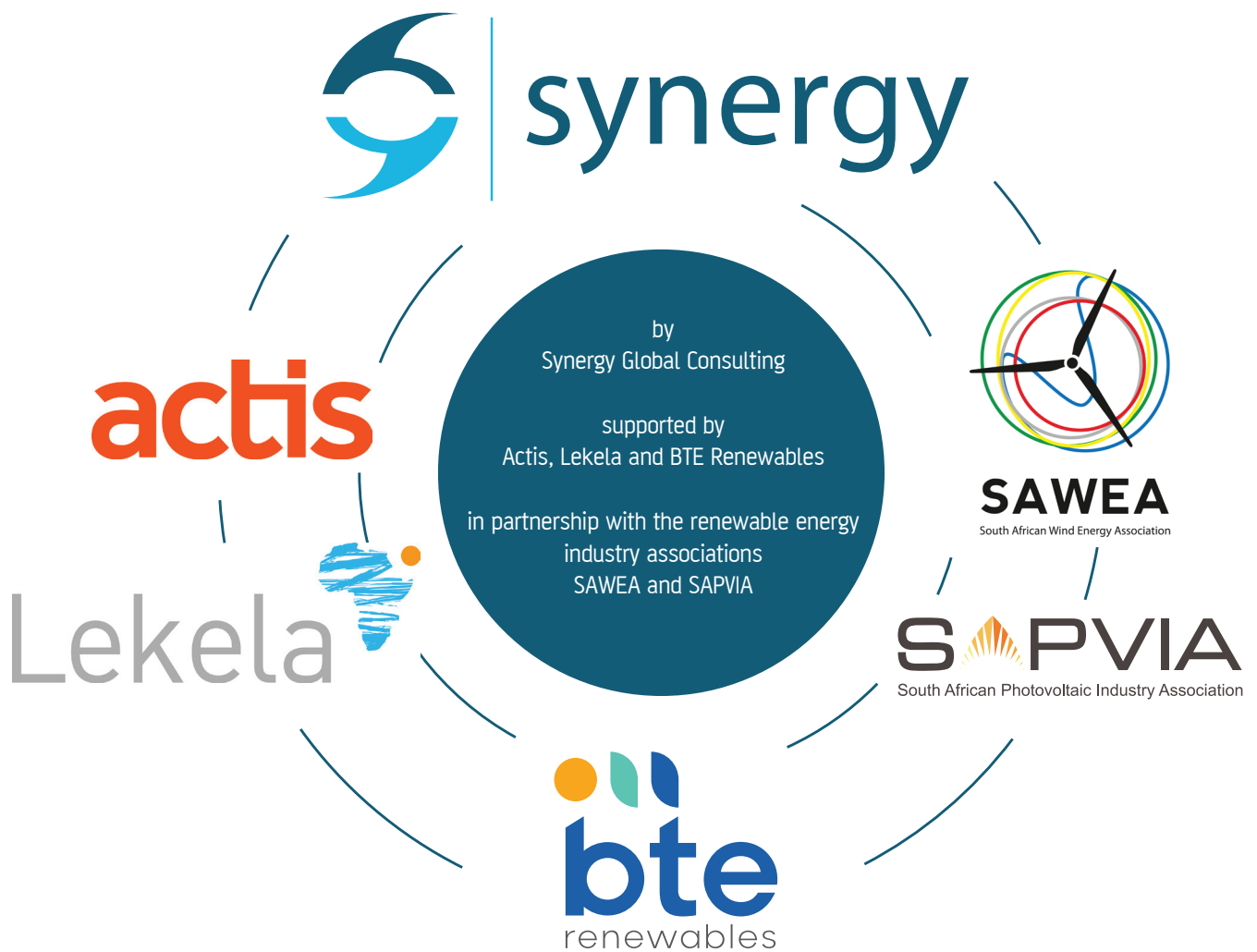


SAPVIA  
South African Photovoltaic Industry Association

# INSPIRE

## Initiative for **Social Performance** in Renewable Energy

Building leadership for a people-centred just transition



# **The challenge:** A step change in the level of skills, knowledge and innovation is needed to realise the transformational socio-economic benefits the renewable energy sector in South Africa can achieve.

---

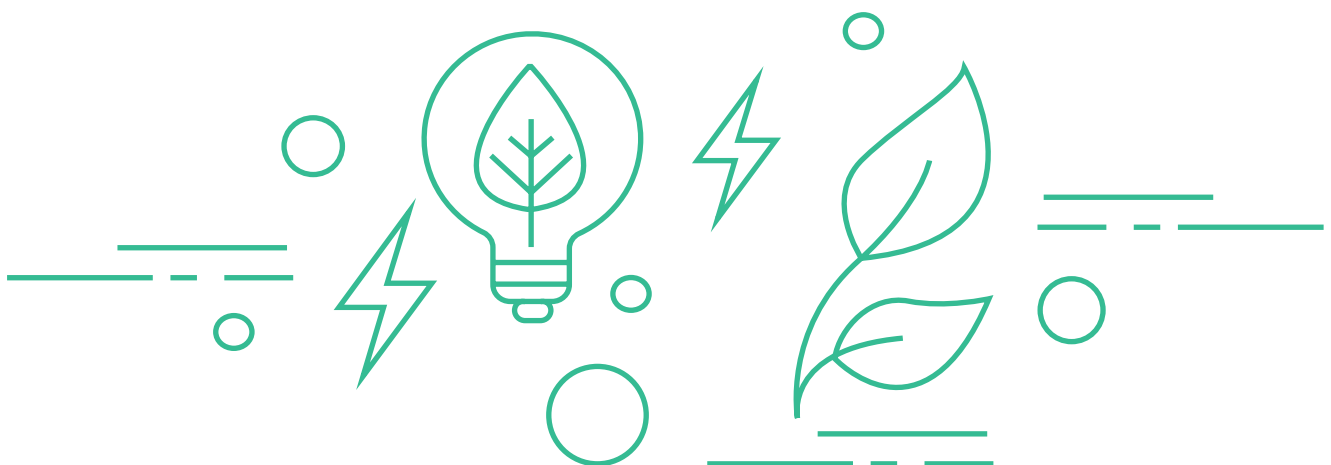
The renewable energy sector in South Africa has grown rapidly since the launch of the utility-scale procurement programme in 2011, and is expected to expand significantly over the coming years. The current independent power producer projects already have the potential to create significant positive socio-economic development impacts.

In recognition of the developmental potential of this growing sector, the regulatory environment in which renewables projects operate is also

changing, with compliance requirements and society's expectations for measurable progress on economic development and transformation growing.

The current time provides a unique opportunity to build social performance capacity - in terms of skills, knowledge and innovation - to maximise the developmental opportunities associated with the energy transition.

## The time is now to address this challenge.



# **The opportunity:** The Initiative for Social Performance in Renewable Energy (INSPIRE) will be a centre of excellence to drive leadership through training, research and innovation.

INSPIRE aims to advance the field of social performance in South Africa's renewable energy sector, with the wider goal of becoming a leading platform across the African continent and internationally.

INSPIRE is a learning and innovation hub for training, communities of practice, research and engagement. INSPIRE focuses on how to develop practice, direct attention, strategically allocate funding, build local capacity, foster partnerships and promote innovation in policy and practice.



# The work: INSPIRE is a platform for learning, knowledge sharing, partnership and innovation.

INSPIRE is built on four mutually supporting areas of work:

## Learning

developing the capacity of industry professionals and stakeholders through training, communities of practice and leadership development, enabling a professionalised practice and empowering internal change

## Knowledge

conducting action-oriented research to support improved practices and policy

## Partnerships

driving transformation and collaboration through engagement and networking with key stakeholders

## Innovation

Prototyping and incubating transformation-focused processes and investments

# The outcome: Enhanced capacity to deliver a transformational and just energy transition.

INSPIRE will build the relational and developmental capacity of corporate social performance practitioners, strengthening the REIPPPP ecosystem to deliver economic development and transformational impacts.

INSPIRE is positioned at the forefront of the renewable energy sector's ambition to drive sustainable development, and provide a high-profile platform to reach a wide audience of stakeholders on this journey.

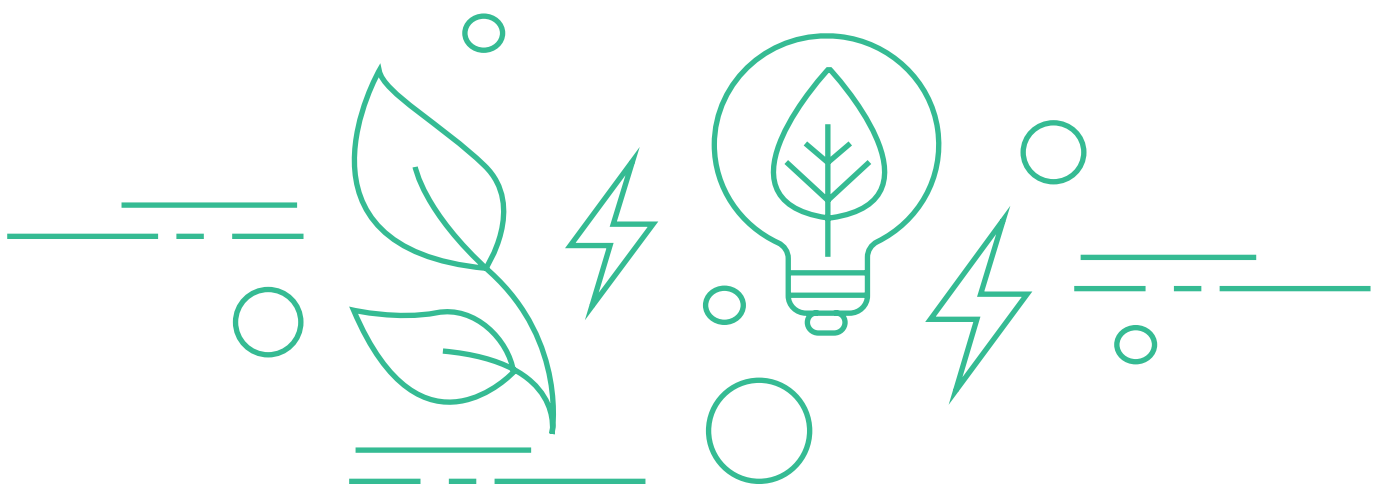
## The team

INSPIRE is a collaborative effort and partnerships are key to its success. Synergy Global Consulting is leading the establishment of INSPIRE with founding support from Actis, Lekela and BTE Renewables. Together, we are inviting further partners to join the Initiative to strengthen and deepen its impact, through supporting the mission, providing funding and by being a partner in delivery of the work.

The INSPIRE concept is being nurtured by Synergy Global Consulting, which is a

trusted leader in the renewable energy and social performance space in South Africa, with a global track record in delivering innovative solutions to build capacity, develop new insights and transform social performance practices.

INSPIRE will be run by a small core team lead by Synergy, with an oversight committee, insights and direction from expert advisors and activities delivered with a range of partners.



# We are seeking support

Opportunities for support and partnership exist across the Initiative's activities, which are focused most immediately upon the urgent need for industry training, and in the medium-term on sector engagement, leadership development, research partnerships, and innovation. It is INSPIRE's intention to build long-term sustainability through revenue generating activities such as training.

## Contact us

**Dr Holle Wlokas**  
Principal,  
Synergy Global Consulting

Cell +27 (0)79 936 1157  
[hollewlokas@synergy-global.net](mailto:hollewlokas@synergy-global.net)

**Jennifer Boca**  
Head of Environment,  
Social and Governance,  
Lekela Power

Cell +44 782 791 6548  
[Jennifer.boca@lekela.com](mailto:Jennifer.boca@lekela.com)

**Libby Hirshon**  
Sustainability/ESG Director,  
BTE Renewables

Cell : +27 (0)82 788 5903  
[LHirshon@bterenewables.com](mailto:LHirshon@bterenewables.com)

